



**HIGHAM**  
FURNITURE

# Simple Quality & Timeless Style

Here at Higham Furniture, exceptional craftsmanship is at the heart of everything we do. Since 2004, we have grown from a team of talented cabinetmakers into one of the South East's leading bespoke kitchen specialists. We craft all our kitchens at our Hampshire workshop. Our skill and attention to detail give each design a beautiful character.

Some might say that we're obsessed with design, but we like to think we're perfectionists. By taking inspiration from the past to create something timeless, our designs truly stand the test of time. We take the classic shaker kitchen as our starting point; with a history of over 300 years, shaker kitchens are known for their simple, unpretentious style and long-lasting quality, factors that still resonate today.

If you'd like to know more about our exceptional service, we'd be delighted to invite you to book a design appointment to discuss your project. A visit is a fantastic opportunity to meet our friendly team and experience the remarkable craftsmanship and attention to detail behind all of our interiors.

We look forward to hearing about your upcoming project soon.



**Tim Higham**  
Director







# About Us

Our story began in 2004 in a small workshop in Hampshire. That's where our team of talented furniture makers first turned their hand to kitchens. Since then, we've never looked back. Our hand built in-frame shaker kitchens have earned us a reputation for quality.

The demand for our kitchens has enabled us to grow our workshop and open a London studio. However, quality remains our number one priority. Our love of the material and the process gives our kitchens their charm. Sharing our handmade products with clients who appreciate the time and attention to detail that goes into our work is a real pleasure.

Click the button below to find out more about Higham Furniture.

ABOUT

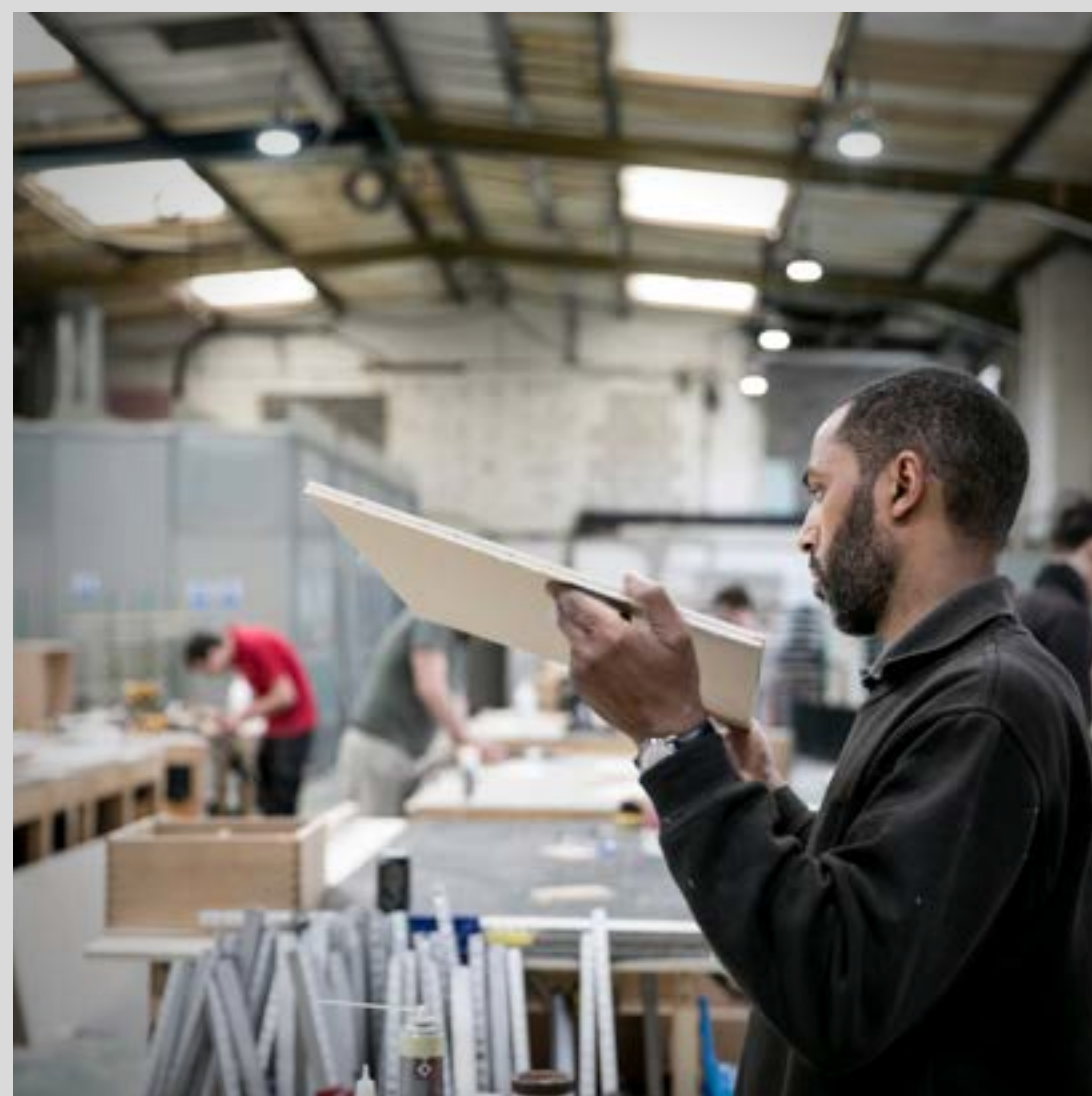
# Workshop

Your kitchen begins life at our Denmead workshop. This gives us complete control over the quality of our furniture. It allows us to select the finest materials and maintain precision at every stage. Our passion and perfectionism give our kitchens their charming character. We always enjoy showing our customers around our workshop, as it allows us to demonstrate the care and pride we take in our work.

Click the button below to contact us today...

MESSAGE US









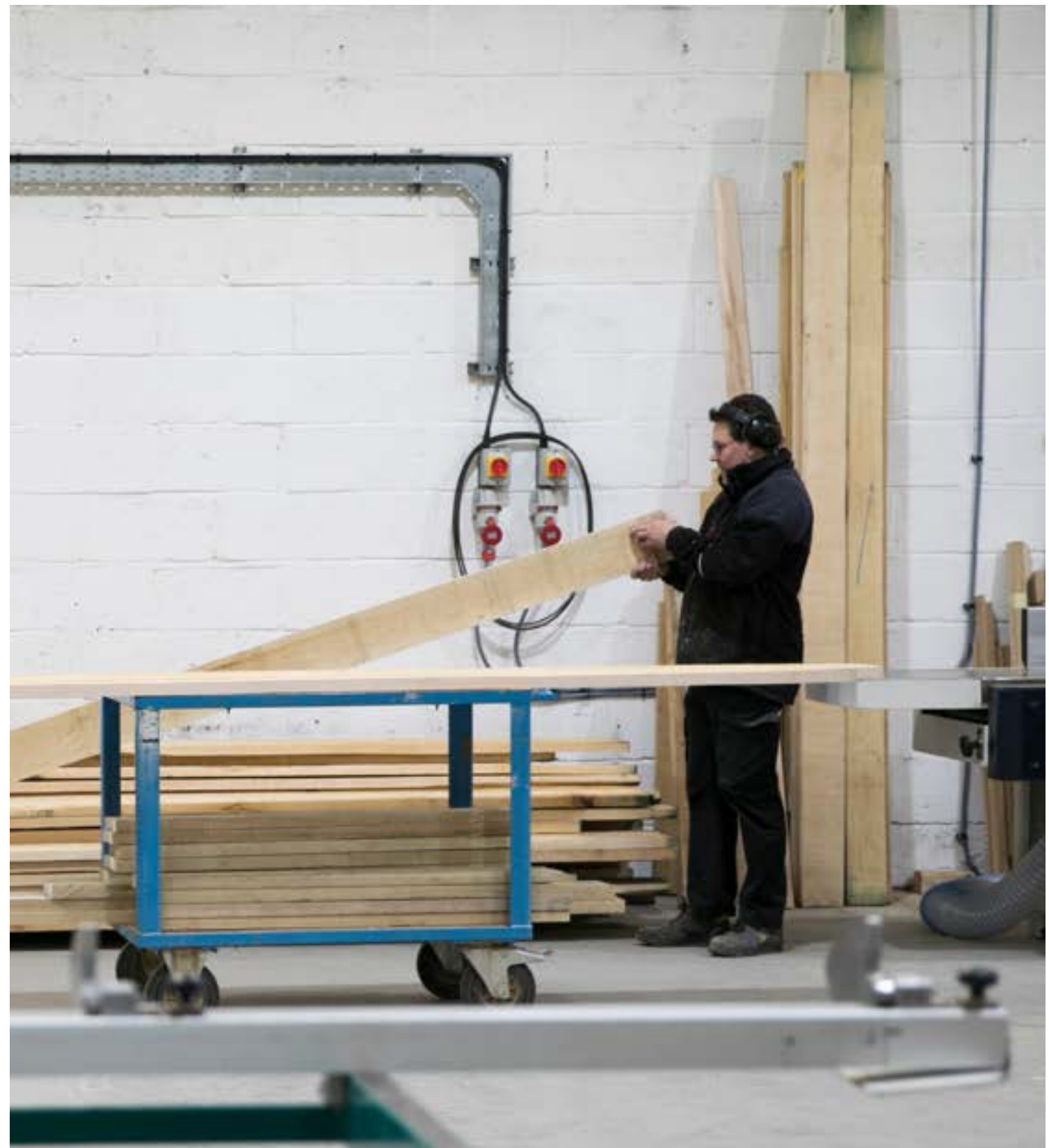
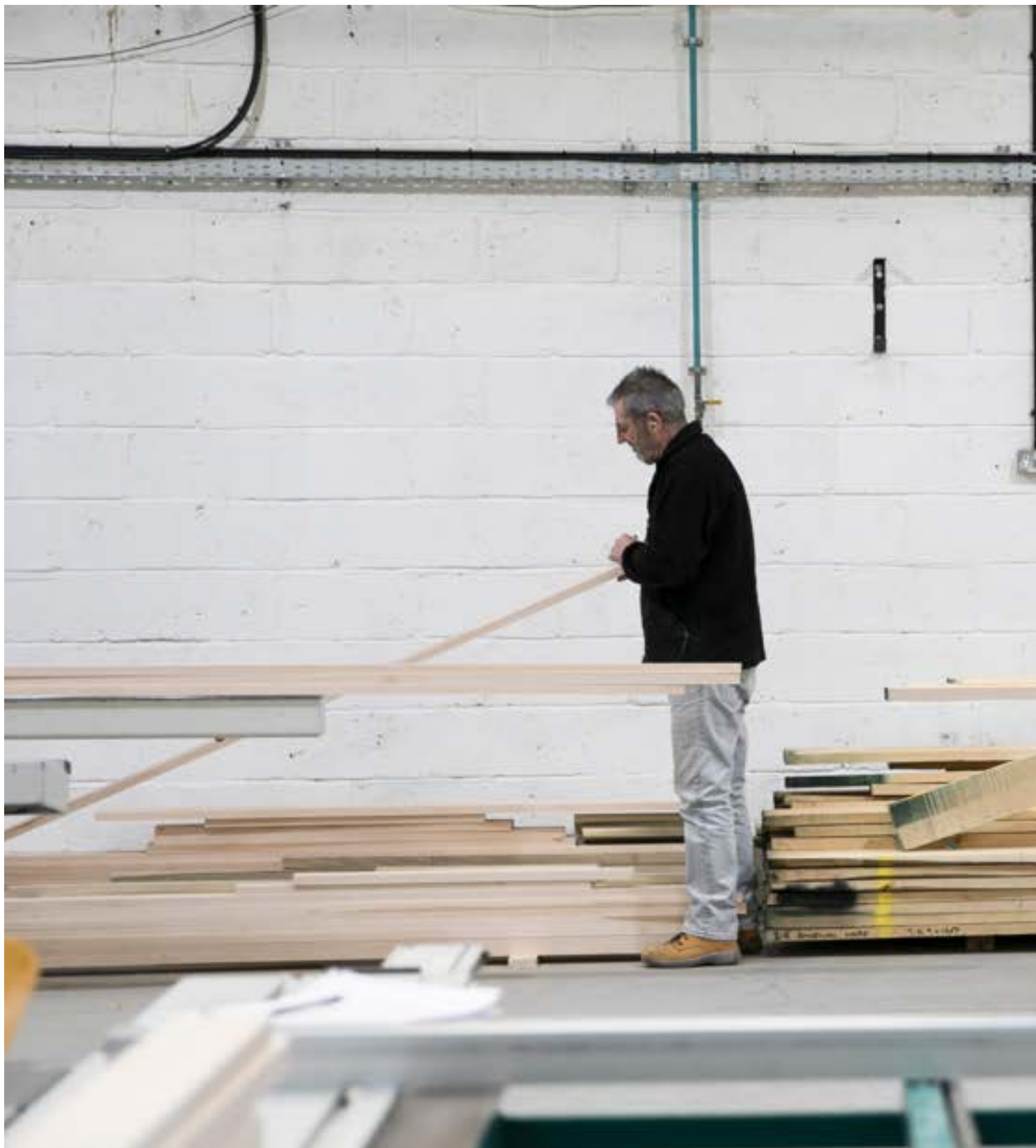
# Kitchen Design

What starts as a simple drawing is gradually and meticulously crafted into something beautiful and unique. A combination of traditional techniques, modern machinery, high-quality materials and the care we dedicate to our work brings precision and character into our designs.

Making all our kitchens to order has the added benefit of promoting complete creative freedom. This means we can add a multitude of personal details to make your kitchen unique, including ensuring your cabinetry fits your room exactly.







# Styles

A traditional and uncluttered framed design forms the foundation of all our kitchens. It gives our interiors their characteristic inviting yet sophisticated charm. Despite sharing the same basic composition, our collections offer wonderful variety. Our handleless and inset handle range is perfect for those looking for something more modern. Alternatively, our traditional kitchens showcase classic details beautifully.

Even though all our kitchens feature the iconic shaker door style, each one is quite unique. Subtle details such as handles, lighting and worktops can make a big difference to the look and feel of your interior.

Whether you already have a design in mind or could use a little inspiration, take a look through some of our exquisite existing projects by clicking the button below...

KITCHENS





# Classic Inset Handle Painted Shaker Kitchen

## Southfields

This elegant shaker kitchen in Southfields exudes a fresh and contemporary feel. Our exclusive inset handles in brushed brass add a characterful detail without interrupting the clean-lined cabinetry.





Crisp white walls and seamless Calacatta worktops mirror the sharp finish and lift the space. Especially when illuminated by the natural light that floods through the Crittall windows and skylights. Little Greene's Ambleside strikes a wonderful harmony between vibrancy and tranquillity, creating a radiant backdrop to cooking and dining.

FIND OUT MORE

# Classic Painted Shaker Kitchen

Kensal Rise

The bright light in this kitchen really allows the @littlegreenpaintcompany Obsidian Green '216' paint colour on our Shaker Kitchen design to pop. A calm but impactful space that creates a bold impression, finished off with classic herringbone flooring and feature Crittall-style external doors.





# Traditional Painted Shaker Kitchen

Earlsfield

Our clients had a clear idea of layout of their new kitchen when they came to us, which made the design process fairly straightforward. We worked with the clients stylistically. The aim was to have a modern kitchen but with a nod to more ornate and traditional elements – we achieved this this by adding moulding within the shaker panels and adding a cockbead detail on all the drawers.







# Handleless Painted Shaker Kitchen

Alresford

An airy and radiant contemporary shaker kitchen with charming classic details.





A combination of fresh colours and pared-back furniture gives this Alresford kitchen a radiant and airy feel. The sleek long lit shelf echoes the clean lines featured throughout our design. It cleverly breaks up the back wall without detracting from the open, uncluttered aesthetic.

A dramatic deep veined Calcutta Quartz worktop brings a subtle touch of luxury. Warm lighting radiating from beneath the shelf enhances the beautiful finish.

[FIND OUT MORE](#)

# Classic Painted Shaker Kitchen

Wimbledon

A timeless family kitchen with a spacious central island is the perfect central point to this 1950s Wimbledon home. Perfect for both preparing food and social dining, the space is accentuated by the natural light falling in from above.





Our Wimbledon homeowners took on a substantial renovation project during lockdown, and it was a real pleasure to be a part of their journey.

As a childrenswear designer and lover of interiors, our creative client was keen to be involved in the design process. We worked closely with her to create a truly timeless kitchen, perfect for a busy young family.

[FIND OUT MORE](#)

# Classic Hand Painted Shaker Kitchen

Dormans Park

Dramatic double island kitchen with a glass-fronted wine storage room.





This is one kitchen that we are proud to say definitely does absolutely have it all! It's a beautiful, calm open space and we were able to provide everything our clients wanted for their dream kitchen. Entertaining and cooking are priorities, so it made sense to create a layout around the concept of two islands.

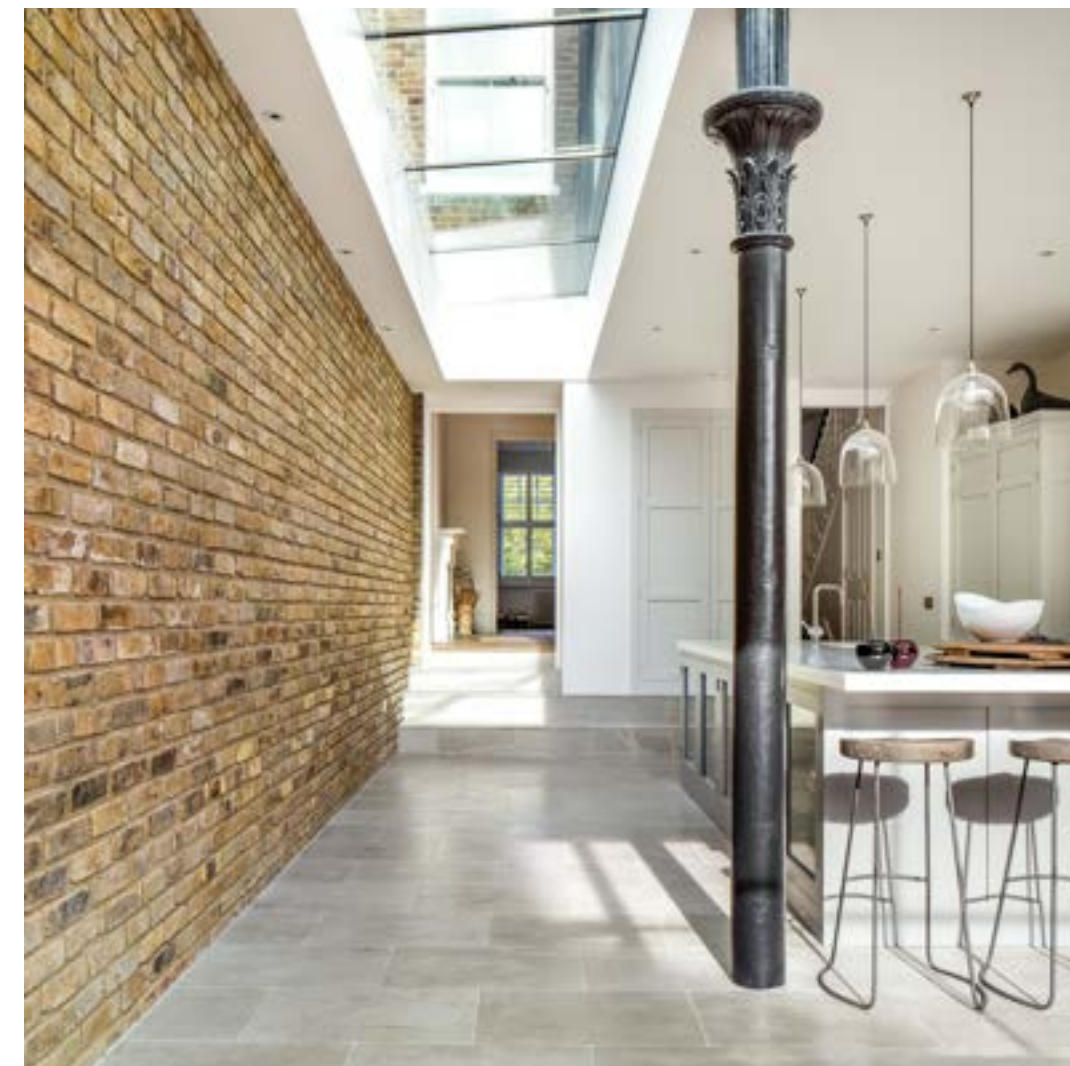
We also suggested dealing with the issue of an awkward corner by positioning the requested wine storage room in that area. A fully glazed door allows the walk-in wine room to be enjoyed from all angles, and the pale oak shelves and fittings within are a lovely contrast against the darker grey cabinets.

[FIND OUT MORE](#)


# Handleless Hand Painted Shaker Kitchen

Wandsworth Common

This dramatic kitchen has lots of very striking features, but thanks to the subtle colour scheme and natural, textured materials used, it feels very grounded and calm.







We were asked to design a practical and easy-to-work-in kitchen for the space created by the new side return and rear extension. As the island is over three metres long we suggested our clients use Corian for the work surfaces. It's a manufactured product that can accommodate larger sizes – natural materials can sometimes be limited in size and need joins, which our client wanted to avoid.

It's an extremely light and airy kitchen, thanks to the skylight and tall Crittal doors and windows.

[FIND OUT MORE](#)

# Traditional Small Painted Shaker Kitchen

Muswell Hill

While this unconventional space is quite spectacular to admire, it certainly posed some design challenges. Namely, how to create a sense of cohesion between the two zones while delivering on practicality.





As well as making a charming design feature, the pot filler above the range negates the issue of traversing the room with heavy pans of water. While the main kitchen area provides space for cooking and preparing food, the island serves as a lovely social hub and washing up spot.

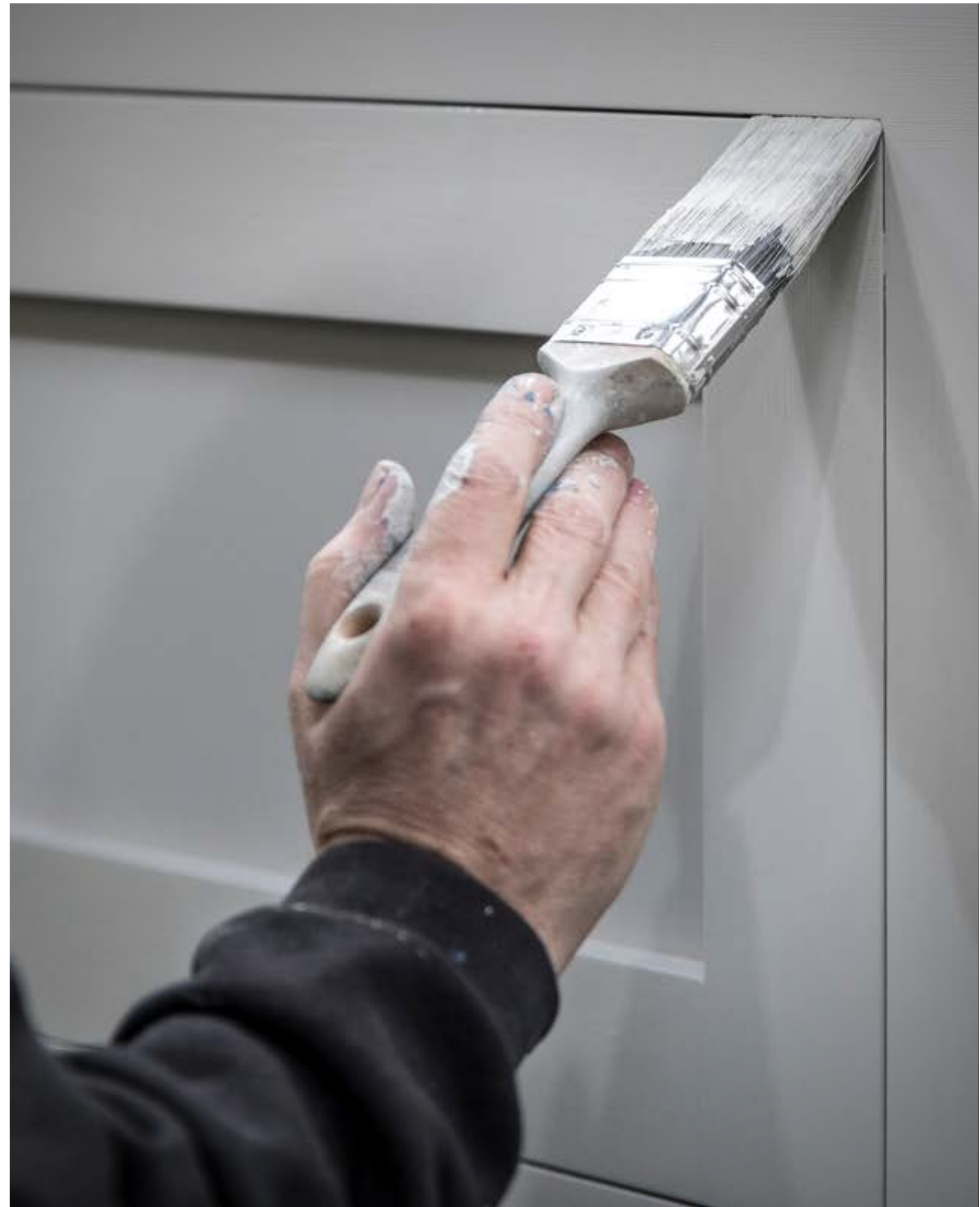
A magnificent bespoke canopy frames the fantastic Lacanche range. This, in turn, is framed by the opening between the two rooms. The square island cleverly references this architectural feature, bringing a sense of continuity to the space. Subtle whitewashed brick detailing behind the kitchen establishes further unity. Our Muswell Hill clients weren't afraid to embrace an adventurous colour choice. The crimson undertones of Little Greene's Welcome Dark pair beautifully with the deep aubergine Cordoba island. Finally, our client's bar stools add an elegant contemporary touch to the interior. This Muswell Hill kitchen is every bit as unique and charming as its extraordinary setting.

[FIND OUT MORE](#)



# Finishes

We require the finest materials to create our kitchens. The quality of the wood used in our kitchens is fundamental to their strength, beauty and exquisite feel. We then achieve a pristine, long-lasting finish by assembling and painting each cabinet by hand. For us, there is simply no substitute for superior materials and skilled craftsmanship.



# Handles

Pairing our timeless shaker kitchen design with different handles can adapt the look and feel of this elegant style to create a kitchen perfect for your space.





# Worktops

Worktops are a pivotal part of any kitchen design. From Corian or Oak to Quartz and Marble there are many aesthetically pleasing finishes we can include into your kitchen design.







# Larders

A bespoke larder can be a wonderful attribute to a traditional kitchen. Historically these were used to keep food in a cool area but with fridges being included in most modern kitchens, a bespoke larder now tends to provide the same functionality as a pantry. The larder is an innovative storage solution that compliments the main cabinetry.

Click the button below to view our range of larders...

LARDERS



# Cupboard & Drawer Internals

Each and every one of our clients has a different requirement when it comes to storage. This is why we create made-to-measure drawer and cupboard internals to fit our clients' needs.







# Contact our expert design team today...

Take the next step & book your free design appointment today. You'll find all our contact details below...

Higham Furniture  
21E Heathmans Road  
Fulham  
London  
SW6 4TJ

Tel: 020 7381 0488  
Email: [info@higham.co.uk](mailto:info@higham.co.uk)

[www.higham.co.uk](http://www.higham.co.uk)

